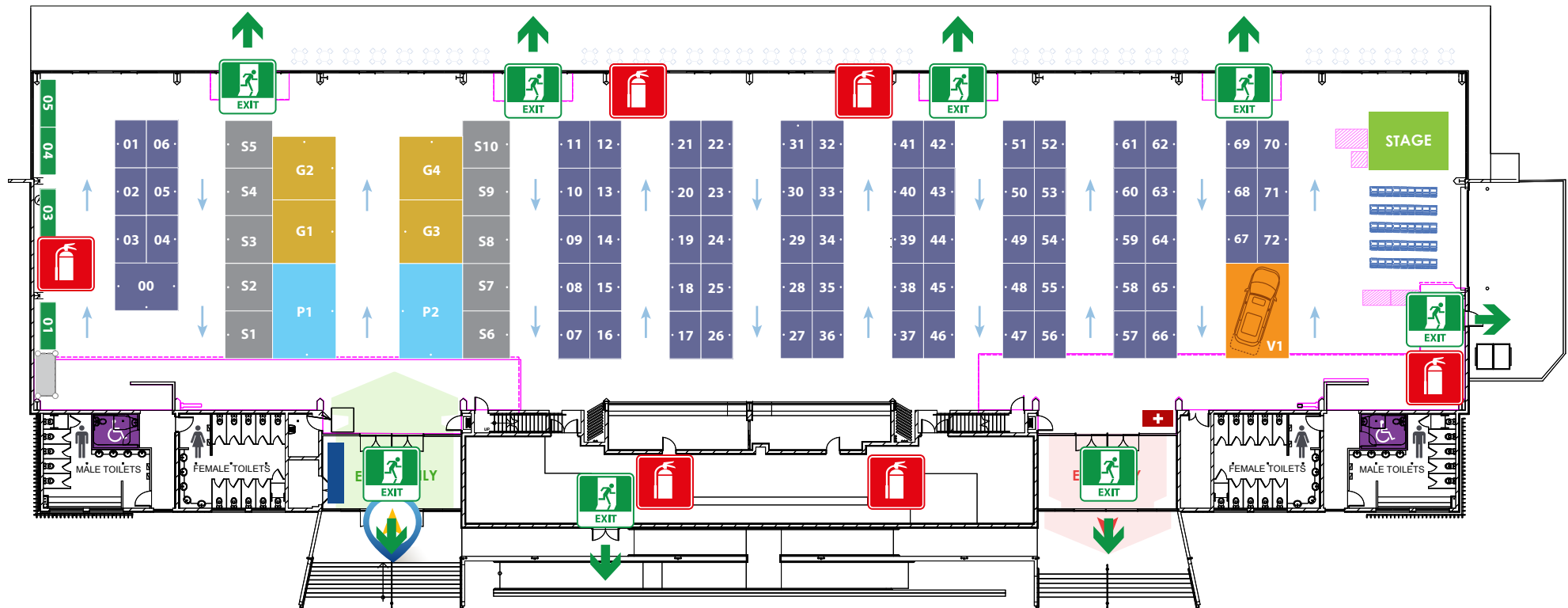


# Emergency Evacuation

The Gold Coast Event Centre



## EVACUATION PROCEDURES



**Dry Chemical  
Extinguisher**



**Emergency  
Exit**

- Follow all instructions given by wardens or fire officers
- Leave immediately by the nearest safe exit
- Move quickly, do not run
- If possible close doors behind you
- Report to your designated assembly area
- If any injuries are sustained, notify a warden
- Advise a warden immediately if you are aware of people trapped in the building
- Do not leave the assembly area until the all clear is given